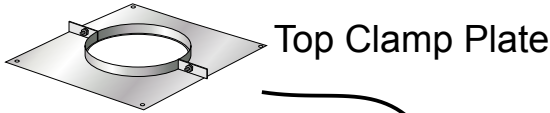
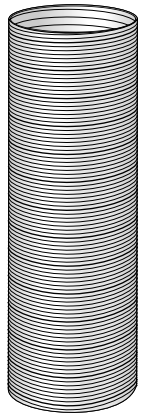


# REFLEX

## Double Ply Stainless Steel Flue Lining System For Multifuel Appliances

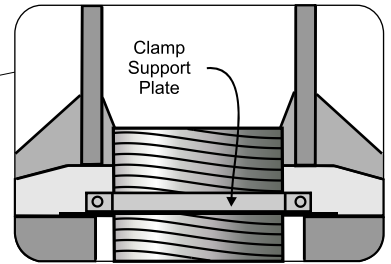
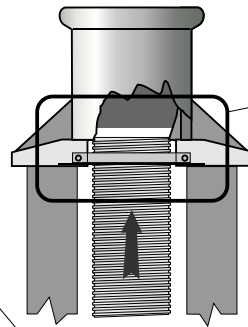
### Chimney Relining Pack

Each pack contains a Flue Liner, a Gather Adaptor, a Top Fixing Plate and Clamp, and a Nose Cone.



Top Clamp Plate

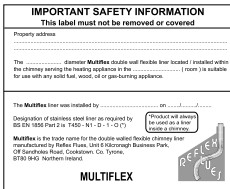
Terminate the liner by either clamping a Rain Cap to the top of the liner, or by using a conventional chimney pot, which must be securely located. In either case, the arrangement should be finished with a suitable acid resistant cement as a seal and sloping weather-proof render. If a pot is used, use the same cement mix, or fire cement, to fill and slope off the gap between the outside of the liner and the inside of the pot.



Note that the liner is marked at intervals with arrows. These must always point from the appliance to the terminal when the liner is installed to prevent debris and condensation from entering the gap in the double wall construction.

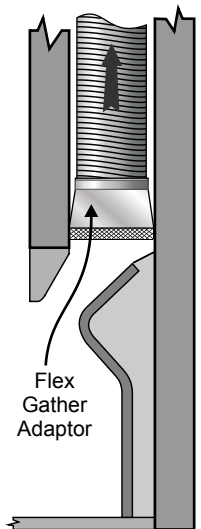


After the liner has been installed, complete the supplied data plate and secure it to an accessible position in the dwelling, e.g. adjacent to a supply meter.

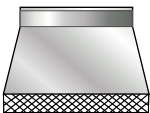
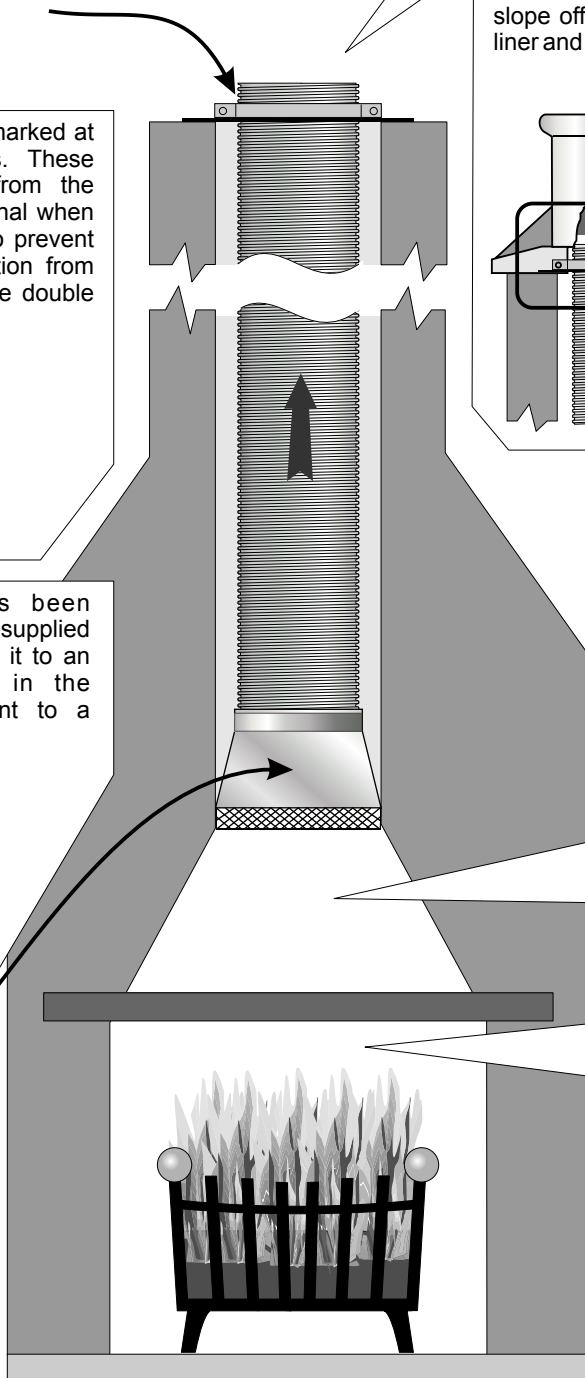


Where the liner serves an appliance discharging into a builder's opening, connect and seal the bottom of the liner into the Gather Unit, which should be located as shown, and be securely fixed to the masonry through all 4 bottom sides. The four edges of the Gather Unit must be sealed with fire cement so that flue gases and air entering the opening, can only pass into the liner, and nowhere else.

If, as shown in the main illustration to the left, the appliance is located in a large opening, it is very important that a gather like an inverted funnel is formed with all sides sloping at an angle not less than 45° from the horizontal to ensure that the smoke and fumes are drawn into the flue. The diameter of the flue is very strictly related to the dimensions of the fireplace opening which, if ignored, will cause problems. The cross sectional area of the flue MUST be at least 12% of the cross sectional area of the fireplace opening. So if using an 8" (200mm) liner the fireplace opening must not exceed an area of about 18" x 24" (460mm x 610mm).



Flex Gather Adaptor



Flex Gather Adaptor

### Reflex Flues

Unit 6 Kilcronagh Business Park, Off Sandholes Road, Cookstown. Co. Tyrone, BT80 9HG Northern Ireland.

Tel: 028 867 58628

Fax: 028 867 69241

Web: [www.mylovelystove.com](http://www.mylovelystove.com) Reflex Flues is a Division of Excel Plumbing Products (N.I.) Ltd

